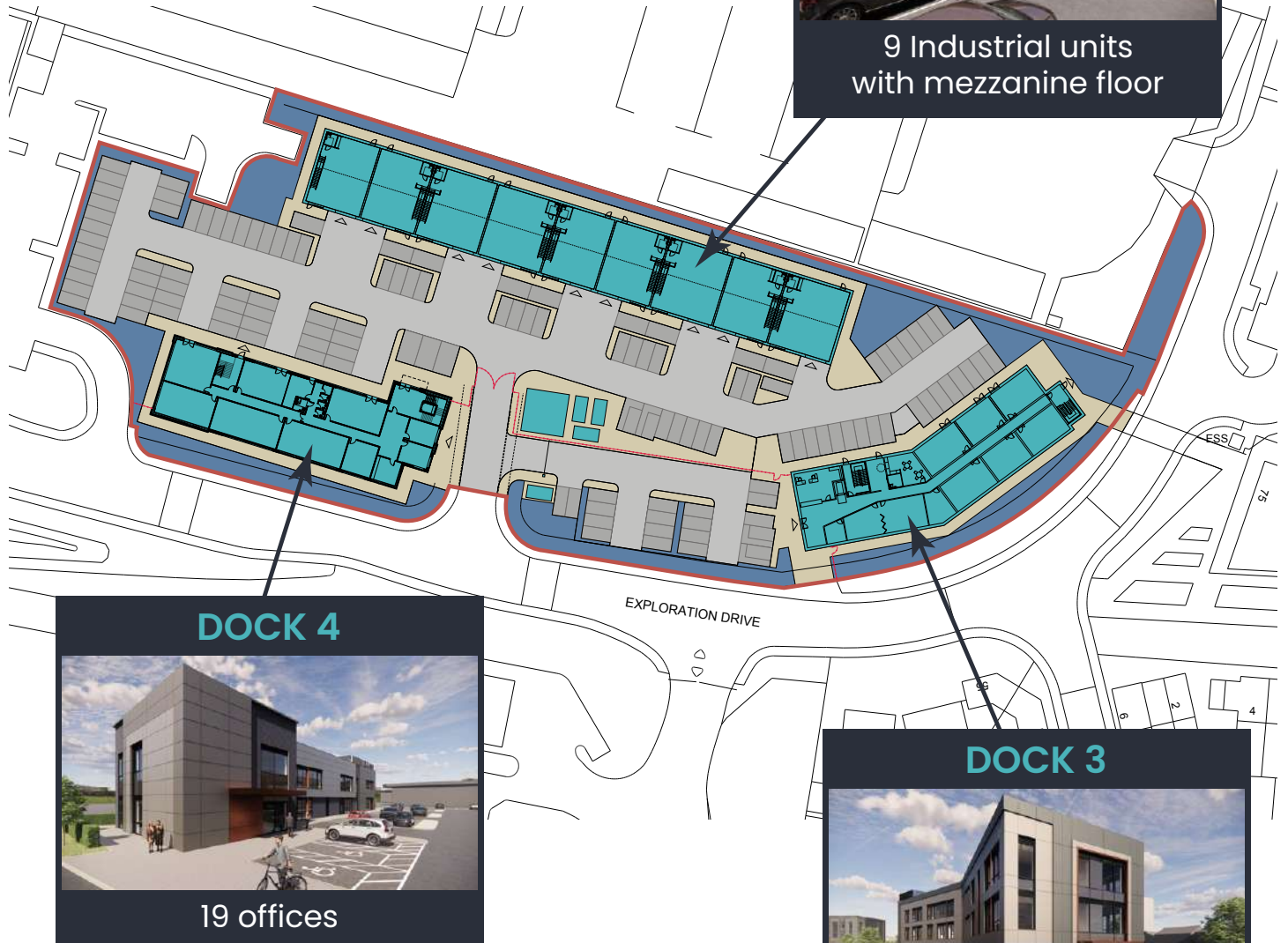


DOCK

Workspace for High Tech
and Innovative Business



DOCK 5



9 Industrial units
with mezzanine floor

DOCK 4



19 offices

DOCK 3



26 offices

- Dock 3-5 opening in Summer 2024 and part of Space City Leicester, one of the largest and most connected Enterprise Zones for space-related activities in the UK
- Net Carbon Zero build
- High quality serviced office and light industrial units
- Flexible leases: serve 3-months' notice at any time
- Great location; 5 mins in car, 10 mins by bike, 30 mins on foot, on the edge of Leicester city centre
- Sizes from 250 to 2500sqft: great for small, medium and large occupiers
- On-site and overflow car park



Funded by
UK Government

POWERED BY
**LEVELLING
UP**



Leicester
City Council

For more information:
+44 (0)116 507 5155
DOCK-3@leicester.gov.uk

www.dockleicester.co.uk